

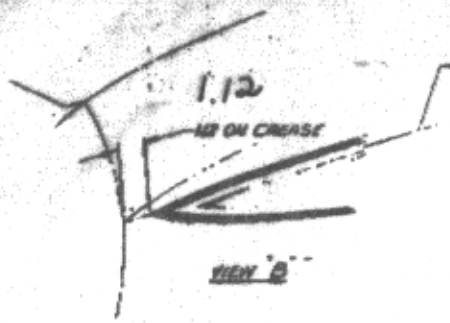
100 - FRONT FENDER SIDE (GT, ST)
 3 RH-LH STRIPE (BLACK)
 9 RH-LH STRIPE (SILVER)
 8 RH-LH STRIPE (BLUE)
 7 RH-LH STRIPE (GOLD)

100 - DOOR SIDE
 1 RH-LH STRIPE (BLACK)
 7 RH-LH STRIPE (SILVER)
 3 RH-LH STRIPE (BLUE)
 9 RH-LH STRIPE (GOLD)

100 - REAR QUARTER PANEL SIDE
 9 RH-LH STRIPE (BLACK)
 5 RH-LH STRIPE (SILVER)
 7 RH-LH STRIPE (BLUE)
 8 RH-LH STRIPE (GOLD)

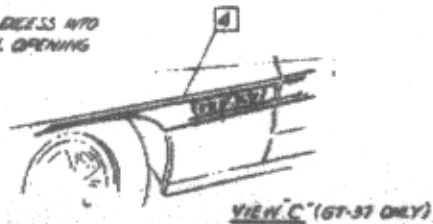
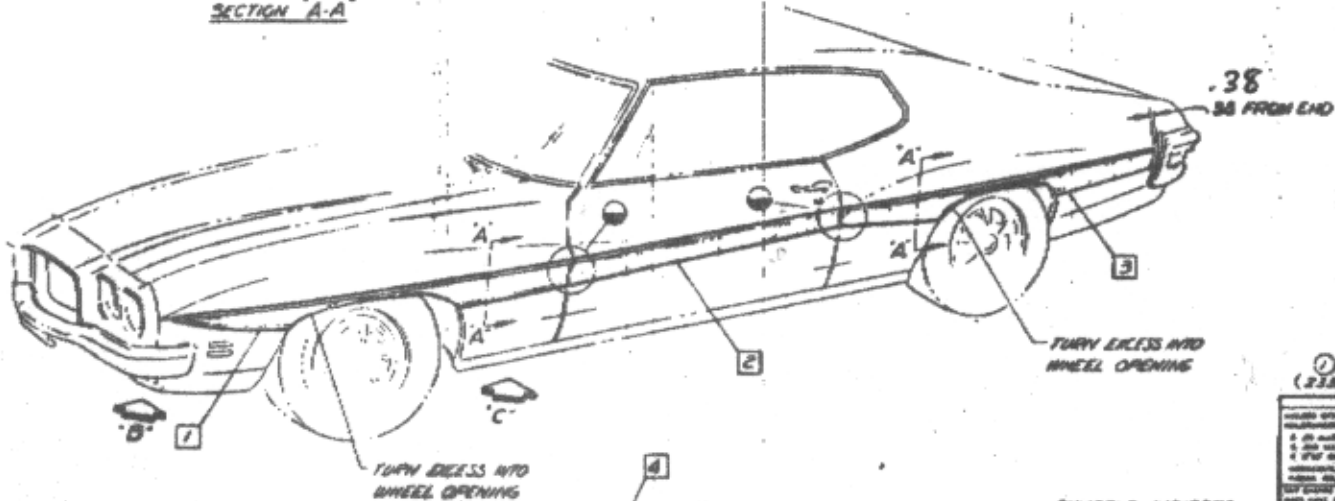
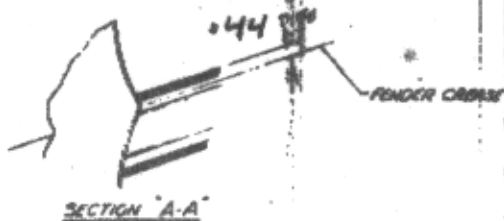
STRIPES TO BE FLUSH
 WITH AT FRONT & REAR
 TRIMMING APPROX - .25 IN

SURFACES AT STRIPING
 MUST BE CLEANED THOROUGHLY
 TO REMOVE ALL OIL, GREASE,
 POLYMER, AND TO STRIPING
 TO INSURE ADHESION.
 STRIPING SHOULD BE APPLIED
 TO COME IN CONTACT
 WITH SURFACE TO BE STRIPED
 TO COME IN CONTACT
 WITH SURFACE TO BE STRIPED
 TO COME IN CONTACT
 WITH SURFACE TO BE STRIPED



STEP 1
 REMOVE PAPER BACKING
 FROM ADHESIVE SIDE OF
 STRIP

STEP 2
 REMOVE PROTECTIVE PAPER
 AFTER DECALS HAVE BEEN
 INSTALLED ON CAR.



486235
SYMBOLS INDICATE:
 ○ REVISION
 □ PART DESIGNATION
 △ TORQUE

① 2327 (2327)

| REVISIONS | |
|-----------|-------------|
| NO. | DESCRIPTION |
| 1 | ISSUED |
| 2 | REVISED |
| 3 | REVISED |
| 4 | REVISED |
| 5 | REVISED |
| 6 | REVISED |
| 7 | REVISED |
| 8 | REVISED |
| 9 | REVISED |
| 10 | REVISED |
| 11 | REVISED |
| 12 | REVISED |
| 13 | REVISED |
| 14 | REVISED |
| 15 | REVISED |
| 16 | REVISED |
| 17 | REVISED |
| 18 | REVISED |
| 19 | REVISED |
| 20 | REVISED |

1974 TEMPEST
 486235
 INSTALLATION DRAWING - STRIPE
 486235